

Township N° VI North, Range N° IV East of 2nd Meridian. Surveyed by Arthur Henrie. 1815.

Description of the Soil on the interior Sectional lines. Total 23,305.30

between Sections	Quality &c	between Sections	Quality &c	between Sections	Quality &c
35.36	Lands level. Timber Oak, Ash, Oak & Hickory	33.34	Lands level covered with water. Timber Gum, Oak, Ash & Hickory	31.32	Lands level. Timber. Oak, Ash, Oak & Hickory
25.36	ditto	27.34	ditto	29.32	ditto
25.26	Lands level covered with water. Timber Ash & Gum &c	27.28	ditto	29.30	ditto
24.25	ditto	27.27	ditto	29.29	ditto
23.24	ditto	26.22	ditto	19.28	Lands hilly thin Soil. Timber Oak & Hickory
13.24	ditto	15.22	ditto	17.20	ditto
13.14	ditto	15.16	ditto	17.18	ditto
12.13	ditto	10.15	ditto	8.17	ditto
11.12	Lands level. Timber Oak, Oak, Oak, Ash, Maple Gum &c	9.10	Lands Rolling. Timber Same	7.8	Lands level. Timber Oak, Oak, Oak, Ash, Oak & Hickory
1.12	Lands more hilly	10.3	ditto	5.8	ditto
1.2	Lands Rolling. Timber Oak, Oak, Oak, Ash, Oak & Hickory	3.4	Lands hilly thin Soil. Timber Oak & Hickory	5.6	ditto
35.35	Lands level. Timber Same	32.33	Lands level. Timber. Oak, Ash, Oak, Oak, Oak & Hickory	6.7	Lands Rolling. Timber Oak, Oak, Oak, Oak &c
35.26	ditto	28.33	ditto	7.18	ditto
26.27	ditto	28.24	Lands hilly. Timber Oak & Hickory	18.19	ditto
23.26	ditto	21.28	ditto	19.30	Lands hilly. thin Soil. Timber Oak & Hickory
22.23	Lands level very wet. Timber Oak, Elm, Maple &c	20.21	ditto	30.31	ditto
14.23	ditto	16.21	ditto		
14.15	ditto	16.17	ditto		
11.14	ditto	9.16	ditto		
10.11	ditto	8.9	ditto thin Soil		
2.11	ditto	4.9	ditto		
2.3	Hilly lands Timber Same	4.5	ditto		

Posts	Bearing trees	Inches dia.	Courses they bear	Inches dist.	Quality of the Soil	Section Corners	Bearing trees	Inches dia.	Courses they bear	Inches dist.	From & to	Bearing trees	Inches dia.	Courses they bear	Inches dist.	
A	Hickory	16	S 67 W	16		25.26.35.36	Beech	8	S 66 E	47	I to X at 1.	Beech	8	S 41 W	22	
a	do	16	S 16 W	72			hemlock	8	S 12 E	14	2.	H. Oak	10	S 48 E	23	
B	Beech	12	S 30 E	9		23.24.25.26	Hickory	10	S 7 E	27		2.	Beech	6	S 83 E	16
b	do	24	S 36 W	13			do	20	S 11 E	9		do	7	S 48 E	10	
C	Poplar	8	S 76 W	6		13.14.23.24	H. Oak	8	S 20 W	15		3.	Hickory	10	S 22 E	21
c	Logwood	4	S 83 W	43			Gum	10	S 65 W	22		do	20	S 22 W	31	
D	Beech	18	S 48 W			11.12.13.14	Hickory	8	S 8 W	18		4.	B. Oak	4	S 86 E	24
d	Hickory	12	S 48 E	10			Maple	15	S 3 E	40		do	20	S 64 W	25	
E	B. Oak	6	S 11 W	11		1.2.11.12	H. Oak	12	S 49 W	18		5.	H. Oak	12	S 51 E	13
e	Hickory	4	S 83 W	6			Beech	12	S 7 E	12		do	10	S 75 W	9	
F	Beech	12	S 40 W	4		26.27.34.35	Beech	12	S 10 E	49		6.	Sugar	10	S 15 E	8
f	do	12	S 40 E	5			do	12	S 22 E	8		do	8	S 34 W	12	
G	Beech	17	S 25 E	14	G to H. Sand Silty	22.23.26.27	Hickory	20	Corner tree		H to Y at 1.	Beech	7	S 48 W	17	
g	do	11	S 52 E	6	Bark & Hickory		do	10	S 48 E	17		2.	do	10	S 53 W	10
g	H. Oak	40	S 10 E	16		14.15.22.23	Maple	10	S 48 W	8		do	10	S 80 E	17	
H	Beech	22	S 26 E	44		10.11.14.15	Beech	8	S 21 E	28		3.	Maple	15	S 88 W	31
h	B. Oak	20	S 24 W	34	H to I. Sand flat. Elm. Ash & very brushy		do	18	S 2 W	29		do	12	S 89 E	27	
I	Maple	15	S 5 E	40		2.3.10.11	Hickory	4	S 25 W	6		4.	do	12	S 73 W	40
i	do	10	S 5 E	29			do	4	S 15 E	24		do	20	S 25 W	17	
i	Elm	8	S 60 W	23		27.28.33.34	Beech	12	S 26 E	26		5.	Beech	12	S 87 W	30
l	H. Oak	30	S 27 E	6			Maple	10	S 15 E	12		6.	Beech	18	S 20 W	6
R	Gum	15	S 23 E	19		21.22.27.28	Beech	10	S 15 E	21		do	20	S 23 W	5	
R	do	8	S 79 W	15			Maple	12	S 64 E	6		do	10	S 27 E	24	
K	Beech	12	S 9 E	23		15.16.21.22	Beech	12	S 10 W	44		do	20	S 5 W	42	
L	Hickory	12	S 7 E	10			do	10	S 30 E	25		2.	Hickory	12	S 13 E	14
L	do	20	S 11 E	16		7.10.15.16	Sugar	10	S 26 E	59		do	18	S 60 W	11	
l	Elm	9	S 72 W	14			do	10	S 28 E	18		3.	Hickory	10	S 10 E	28
M	H. Oak	18	S 36 W	15		28.29.32.33	Hickory	18	S 76 E	25		4.	Maple	7	S 8 E	14
M	Walnut	12	S 60 W	14			Beech	8	S 70 E	17		do	5	S 50 W	6	
m	Elm	12	S 75 W	12		20.21.25.29	Beech	12	S 62 W	25		5.	Hickory	12	S 2 E	47
m	Beech	20	S 73 E	19			do	10	S 75 W	14		do	12	S 6 E	12	
N	Beech	20	S 52 W	13		10.17.20.21	B. Oak	8	S 10 W	6		6.	Poplar	5	S 8 E	27
n	do	9	S 53 W	13			do	4	S 85 W	3		do	18	S 16 E	19	
n	Hickory	7	S 87 E	57		8.9.10.17	H. Oak	18	S 67 W	10		H. Oak	10	S 31 W	22	
o	Hickory	12	S 26 W	43			do	12	S 34 E	14		do	8	S 52 E	8	
O	Elm	10	S 51 E	39		4.5.8.9	H. Oak	30	S 40 W	45		2.	Beech	8	S 4 E	29
o	H. Oak	8	S 20 E	20			do	20	S 10 E	32		3.	Sugar	10	S 84 E	3
o	Sycamore	10	S 37 E	16		29.30.31.32	Hickory	20	S 35 E	7		4.	Beech	20	S 43 W	11
P	do	12	S 3 E	5			H. Oak	12	S 3 E	42		do	8	S 45 E	15	
P	Sugar	8	S 61 E	10		19.20.29.30	Beech	18	S 5 E	14		5.	H. Oak	6	S 6 W	18
P	Beech	10	S 56 W	16			do	20	S 58 W	16		do	12	S 50 E	12	
P	Hickory	15	S 42 W	19		17.18.19.20	Logwood	0	S 61 E	8		6.	B. Oak	20	S 27 E	28
Q	Hickory	10	S 26 W	5			H. Oak	10	S 5 W	8		do	18	S 24 W	25	
q	Maple	10	S 15 W	10		7.8.17.18	do	20	S 17 W	30		do	10	S 21 E	30	
q	Elm	12	S 63 E	21			Beech	8	S 23 E	47		do	8	S 32 E	25	
R	Hickory	12	S 88 E	12		5.6.7.8	Beech	10	S 23 E	1		2.	Maple	10	S 34 E	11
r	Gum	10	S 99 E	4			do	8	S 15 W	24		3.	Beech	12	S 37 E	18
S	B. Oak	24	S 87 W	15								4.	Maple	12	S 38 W	8
S	Beech	10	S 47 W	15								5.	Hickory	10	S 71 E	20
S	B. Oak	30	S 75 W	14								do	6	S 8 E	15	
S	Hickory	10	S 32 E	12								do	5	S 84 W	15	
T	Beech	12	S 5 W	47								6.	B. Oak	12	S 18 W	24
t	do	12	S 9 W	23								Gum	8	S 80 E	16	
U	H. Oak	12	S 30 E	22								do	12	S 75 W	94	
U	B. Oak	10	S 80 E	21								2.	Poplar	8	S 2 W	11
u	do	20	S 46 E	19								do	12	S 20 W	12	
V	B. Oak	10	S 75 E	22								3.	B. Oak	12	S 18 E	10
v	do	12	S 30 E	22								H. Oak	18	S 51 W	26	
W	Hickory	8	S 89 E	20								4.	Hickory	8	S 56 E	17
w	B. Oak	12	S 12 E	25								do	20	S 36 W	11	
X	Poplar	9	S 52 E	5								do	20	S 4 W	16	
x	do	6	S 78 E	7								do	12	S 21 E	8	
Y	Beech	8	S 50 W	40								do	10	S 7 W	18	
y	Beech	10	S 46 E	15								do	12	S 4 E	48	
Y												do	20	S 29 W	17	
Y												do	18	S 30 E	3	
Y												2.	B. Oak	24	S 44 W	45
Y												do	12	S 76 W	39	
Y												3.	Hickory	20	S 51 E	22
Y												do	6	S 76 W	13	
Y												4.	Hickory	10	S 20 E	28
Y												do	7	S 34 W	25	
Y												5.	H. Oak	13	S 83 W	22
Y												do	12	S 5 E	54	
Y												6.	Beech	8	S 8 E	12
Y												do	18	S 13 E	30	
Y																
Y																
Y																
Y																
Y																
Y																
Y																
Y																
Y																
Y																
Y																
Y																
Y																
Y																
Y																
Y																
Y																
Y																
Y																
Y																
Y																
Y																
Y																
Y																
Y																
Y																
Y																
Y																
Y																
Y																
Y																
Y																
Y																
Y																

Quarter Section Corners described

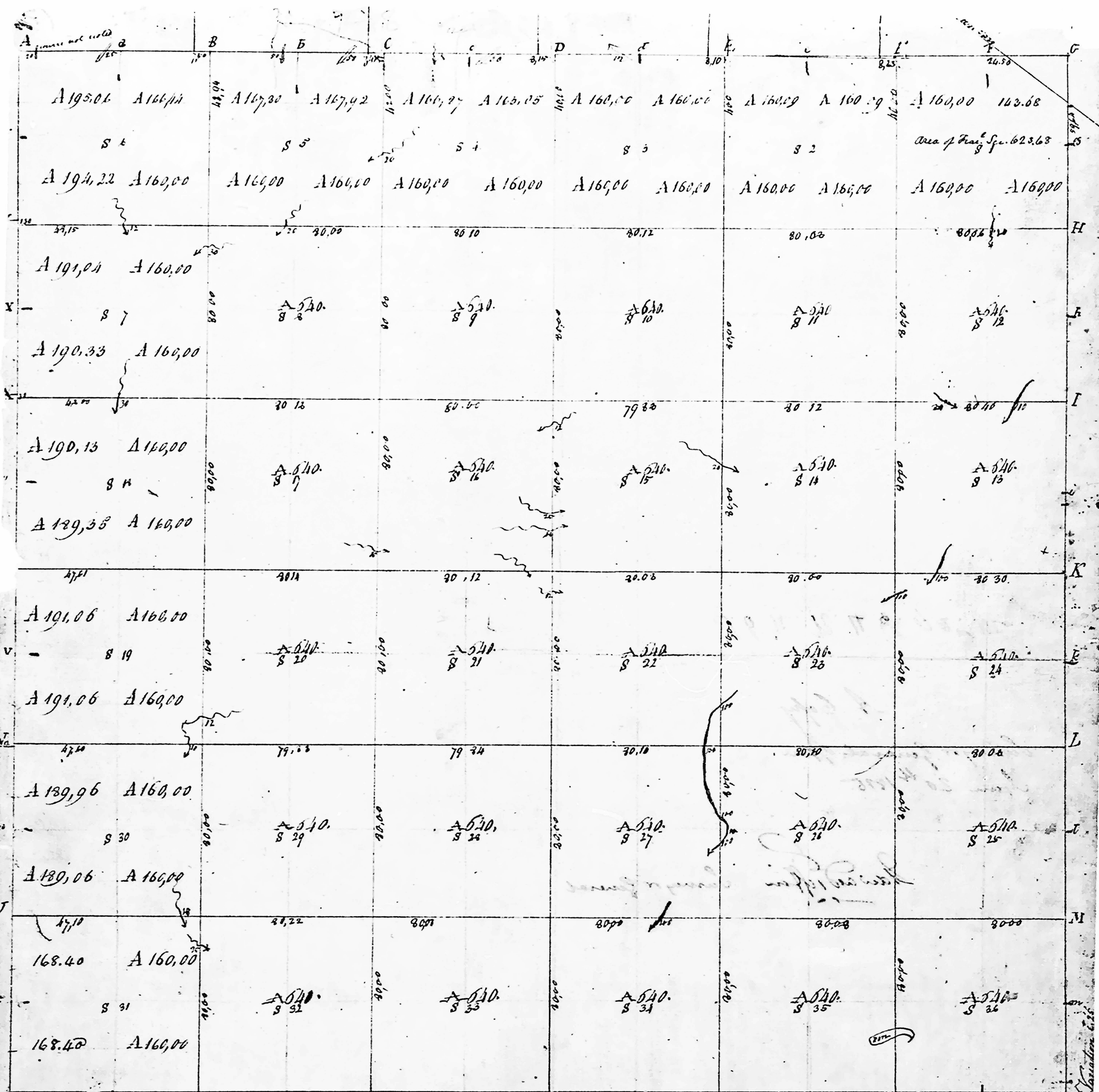
From & to	Bearing trees	Inches	Courses	Inches
		dia.	they bear	dist.
M to U at 1.	Hickory	8	S 19 E	11
	Elm	9	S 14 E	7
2.	H. Oak	18	S 62 W	33
	Elm	12	S 50 E	12
3.	B. Oak	4	S 62 W	6
	do	5	S 48 E	10
4.	Hickory	12	S 40 W	18
	Beech	20	S 80 E	38
5.	Hickory	12	S 58 E	38
	Logwood	4	S 62 E	30
6.	H. Oak	20	S 76 E	40
	do	10	S 20 W	25
L to V at 1.	Gum	12	S 81 W	15
	do	18	East	18
2.	Hickory	10	S 10 E	7
	Beech	8	S 46 E	29
3.	Beech	10	S 62 W	14
	do	12	S 57 W	8
4.	Beech	12	S 27 W	35
	Poplar	6	S 11 E	21
5.	H. Oak	12	S 52 W	34
	do	20	S 75 E	25
6.	H. Oak	12	S 84 W	17
	do	12	S 86 E	30
R to W at 1.	Beech	10	S 52 E	27
	H. Oak	10	S 40 W	9
2.	Maple	8	S 23 E	2
	do	8	S 15 W	4
3.	Maple	10	S 80 E	31
	do	12	S 10 W	9
4.	Beech	12	S 78 E	21
	do	12	S 89 W	25
5.	B. Oak	10	S 14 E	9
	do	8	S 88 W	19
6.	Hickory	7	S 34 E	33
	do	10	S 73 W	18

From & to	Bearing trees	Inches	Courses	Inches
		dia.	they bear	dist.
I to X at 1.	Beech	8	S 41 W	22
	H. Oak	10	S 48 E	23
2.	Beech	6	S 83 E	16
	do	7	S 48 E	10
3.	Hickory	10	S 22 E	21
	do	20	S 22 W	31
4.	B. Oak	4	S 86 E	24
	do	20	S 64 W	25
5.	H. Oak	12	S 51 E	13
	do	10	S 75 W	9
6.	Sugar	10	S 15 E	8
	do	8	S 34 W	12
H to Y at 1.	Beech	7	S 48 W	17
	do	7	S 58 W	22
2.	Cherry	10	S 53 W	10
	Maple	10	S 80 E	17
3.	Maple	15	S 88 W	31
	H. Oak	12	S 89 E	27
4.	do	12	S 73 W	40
	B. Oak	20	S 25 W	17
5.	Beech	12	S 87 W	30
	Beech	18	S 20 W	6
6.	Beech	20	S 25 W	5
	do	10	S 27 E	24
O to Fat 1.	Maple	20	S 5 W	42
	do	24	S 57 W	27
2.	Hickory	12	S 13 E	14
	do	18	S 60 W	11
3.	Hickory	10	S 10 E	28
	do	10	S 70 E	6
4.	Maple	7	S 8 E	14
	do	5	S 50 W	6
5.	Hickory	12	S 2 E	47
	do	12	S 6 E	12
6.	Poplar	5	S 8 E	27
	H. Oak	18	S 16 E	19
P to Eat 1.	Beech	10	S 31 W	22
	Ironwood	8	S 52 E	8
	do	8	S 4 E	29
2.	Maple	10	S 34 E	11
	do	8	S 47 E	14
3.	Beech	12	S 37 E	18
	Maple	12	S 38 W	8
4.	Hickory	10	S 71 E	20
	do	6	S 8 E	15
5.	Logwood	5	S 84 W	15
	do	12	S 18 W	24
6.	B. Oak	12	S 18 W	24
	Gum	8	S 80 E	16
R to C at 1.	Hickory	12	S 75 W	94
	do	12	S 2 W	11
2.	Beech	12	S 20 E	20
	do	12	S 20 W	12
3.	B. Oak	12	S 18 E	10
	H. Oak	18	S 51 W	26
4.	Hickory	8	S 56 E	17
	Beech	20	S 36 W	11
5.	B. Oak	20	S 4 W	16
	do	12	S 21 E	8
6.	Beech	10	S 7 W	18
	do	12	S 4 E	48
S to Bat 1.	Gum	20	S 29 W	17
	Hickory	18	S 30 E	3
	B. Oak	24	S 44 W	45
2.	B. Oak	12	S 76 W	39
	Hickory	20	S 51 E	22
3.	H. Oak	6	S 76 W	13
	B. Oak	10	S 20 E	28
4.	Hickory	7	S 34 W	25
	do	18	S 83 W	32
5.	H. Oak	12	S 5 E	54
	do	8	S 8 E	12
6.	Beech	18	S 15 E	30

Posts on Indian boundary

G	Beech	8	S 78 W	10
do	do	20	S 82 E	23

Posts	on River
1. Beech	20 S 11 E 24
do	23 S 75 E 19



T. E. P. on the map
S. 17-B Township No. 6 South Range No. 4 East. 2. 9M.

INDIANA.
N & E 2 P. M.

Pursuant to a Contract with and Instructions, from, said Mansfield Surveyor General of the United States, bearing date the 15th Day of November have admeasured, laid out, and surveyed, the above described Township, And do certify, that it is such marks and bounds, both natural and artificial, as are represented on said plat, and described in the field notes made thereof, and returned with this plat, into the Surveyor General's office.

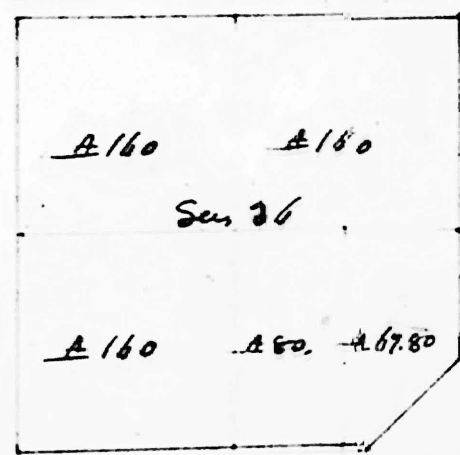
IND
Certified this 15th Day of June 1814
Arthur Hemis L, Surveyor

Fractional Sections in Jeffersonville District

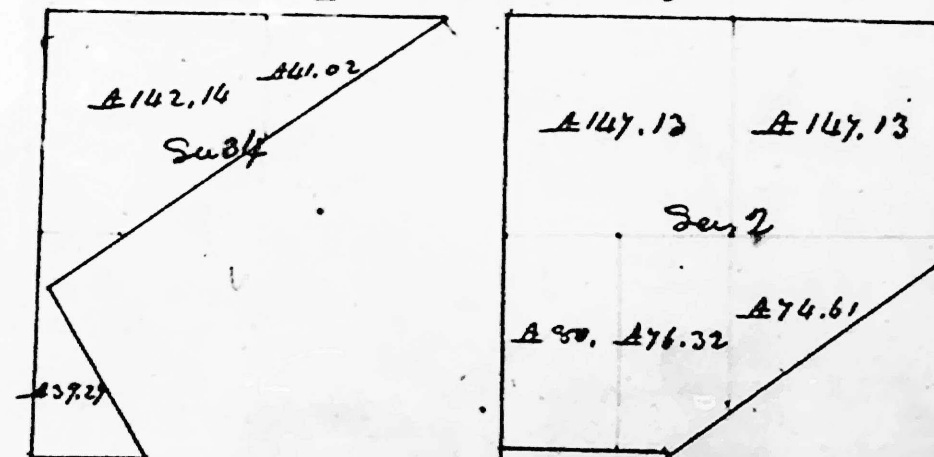
Township N. 5 N., Range N. 3 E. 2. m.



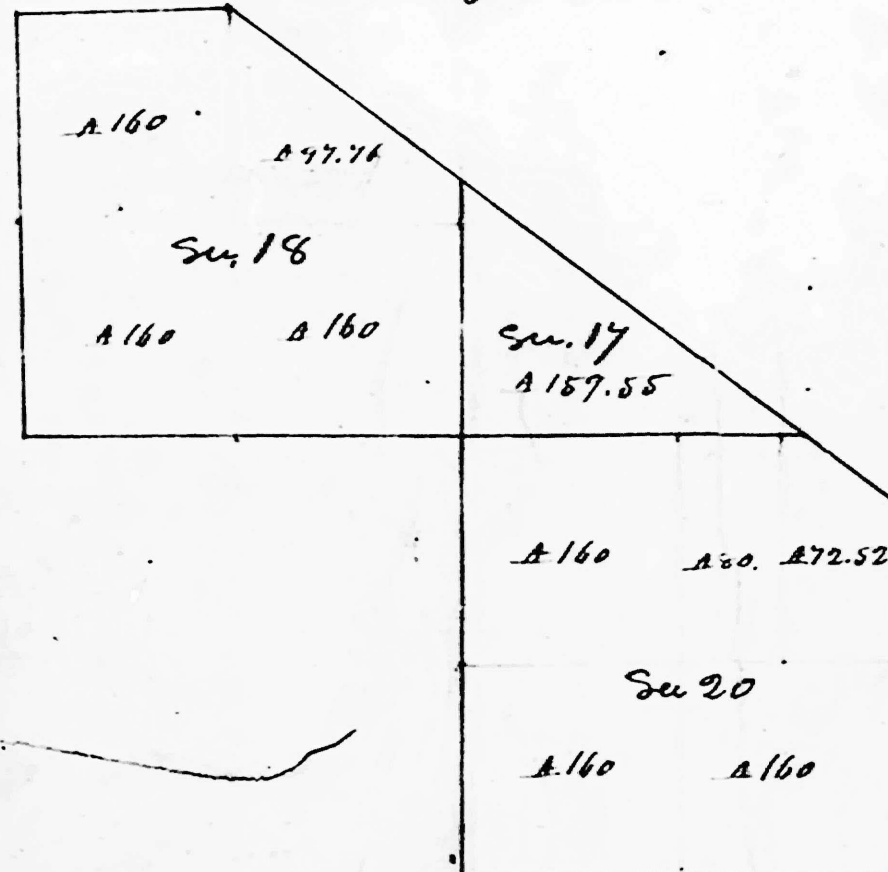
Township N. 2 N., Range N. 6 E. 2. m.



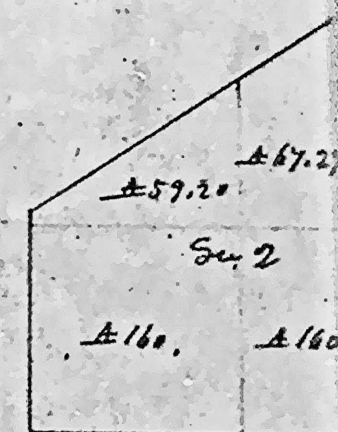
Township N. 1 N., Range N. 6 E. 2. m.



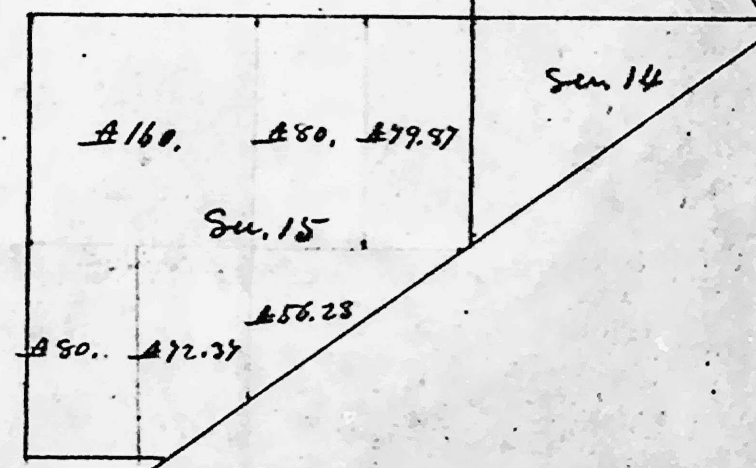
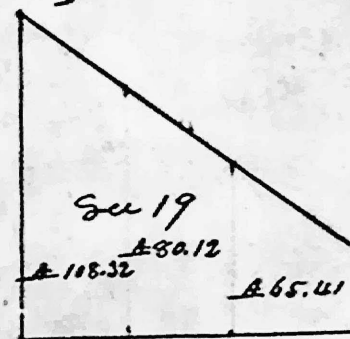
Township N. 7 N., Range N. 4 E. 2. m.



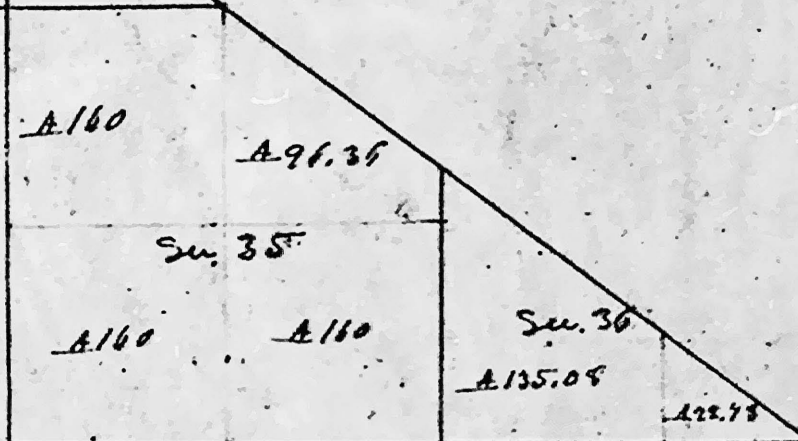
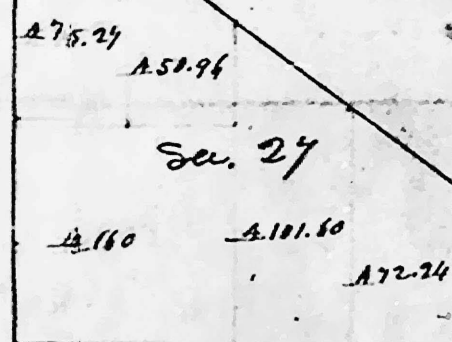
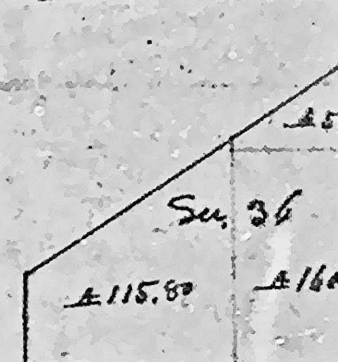
Township N. 6 N., Range N. 6 E. 2. m.



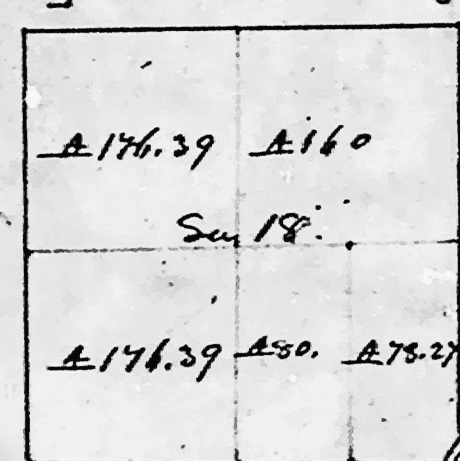
Township N. 9 N., Range N. 3 E. 2. m.



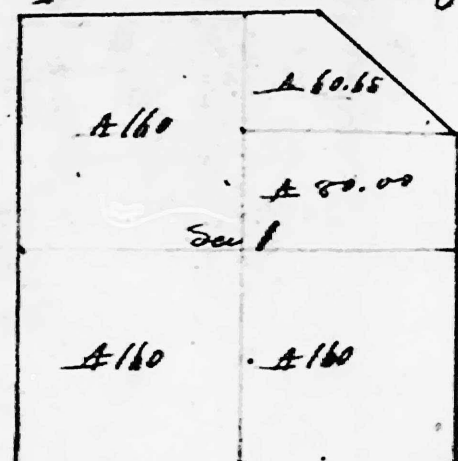
Township N. 7 N., Range N. 6 E. 2. m.



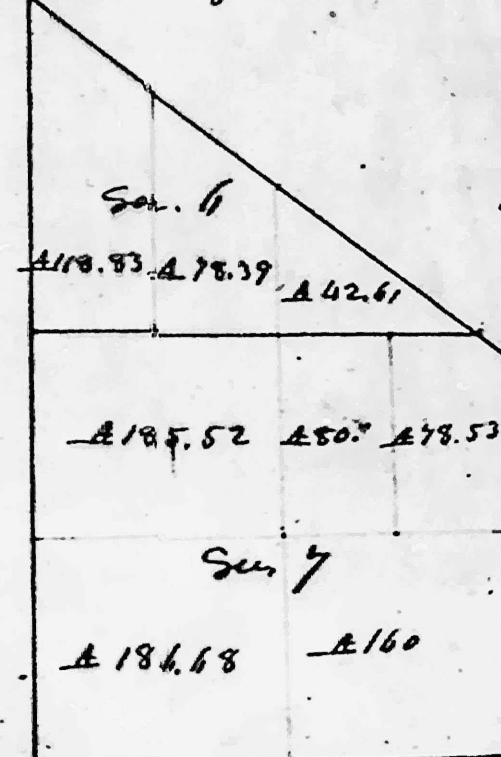
Township N. 5 N., Range N. 4 E. 2. m.



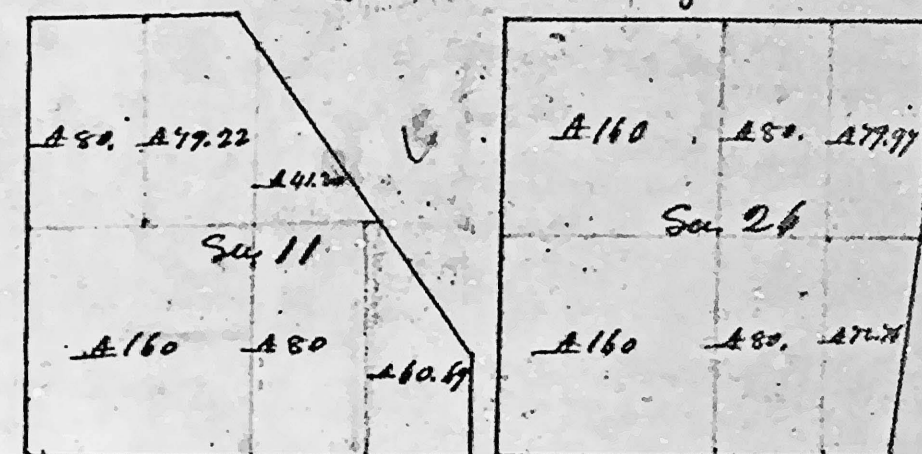
Township N. 6 N., Range N. 4 E. 2. m.



Township N. 6 N., Range N. 5 E. 2. m.



Township N. 1 N., Range N. 6 E. 2. m.



[illegible]

South Orange St. 4 East 2 m.

I have admeasured, laid out, and surveyed, the above described Township, and do Certify, that it has its limits and bounds, both natural and artificial, as are described in the field notes made thereof, and represented as such, and returned into the Surveyor General's Office.

Witnessed this 24th day of June 1814 Arthur Henric Esq. Surgeon